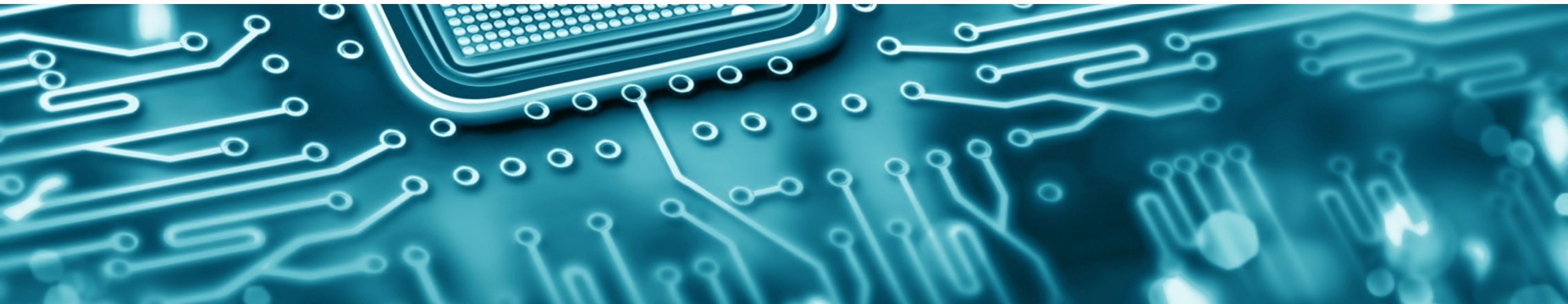


IC INSIDE



Lab Introduction

A Quick Lab Tour



Equipments for sample preparation, cross-sectioning, delayering and high resolution imagery

- Wet and dry chemistry for achieving fast, reliable and precise deprocess and cross sections
- High end polishing system for accurate deprocessing across the entire die surface
- SEM for achieving ultra high resolution pictures for IC Reverse-Engineering

Teardown Equipments



Photography setup including:

- Product shot table
- 2 flashes
- 12 Meg. Full sensor DSLR
 - 100 mm macro lens with ring flash
 - 65 mm super macro lens with magnification ration 1 to 5x

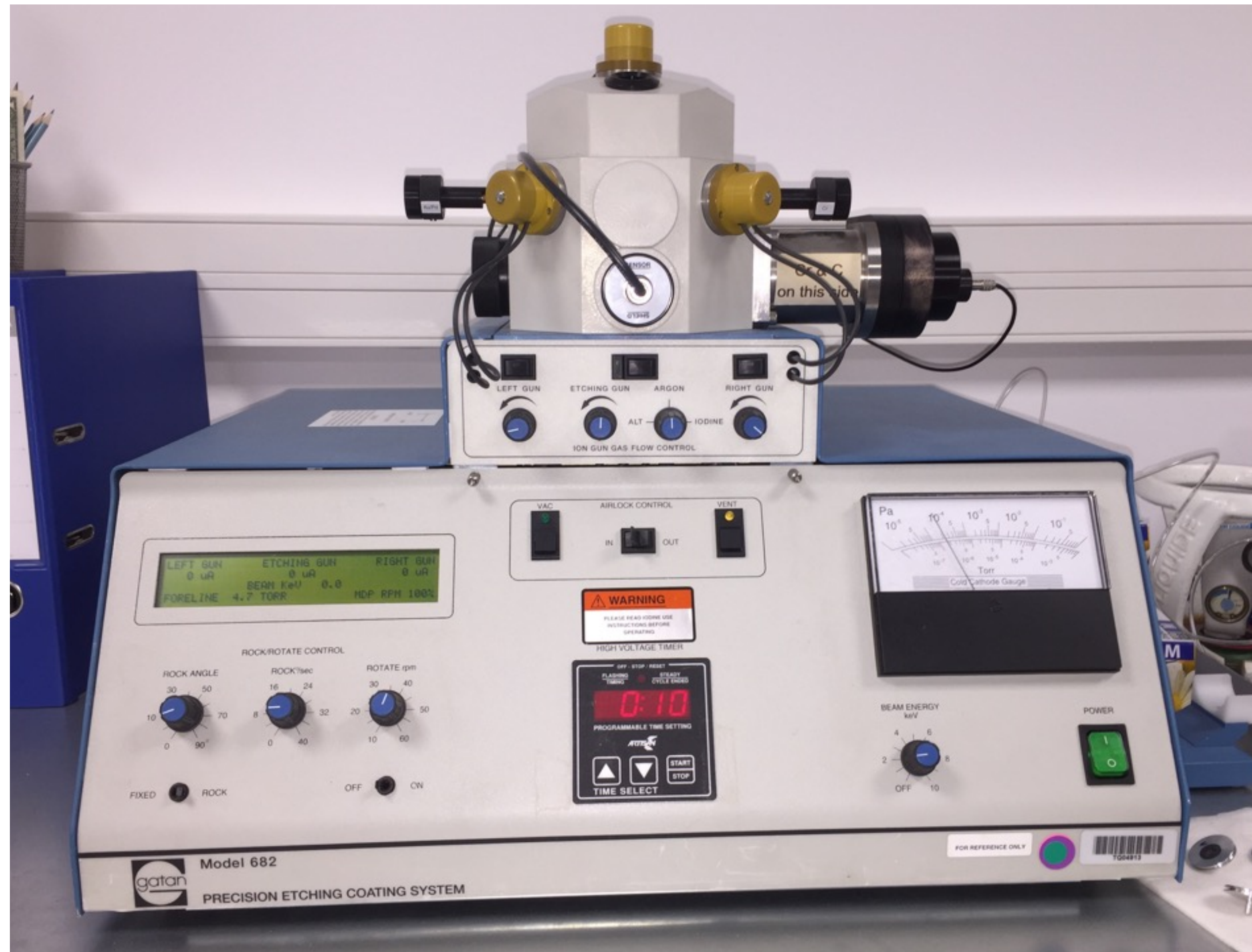
Deprocessing Equipments



Chemical hood and cabinet:

- Wet chemistry for:
 - Depackaging
 - Substrate sample preparation
 - Silicon bulk removal

Deprocessing Equipments



GATAN PECS

- Wide beam etching and deposition system
- Silicon Dioxide etching
- Cross-section finish step
- Cr/C/Ag/AgPa thin film deposition for SEM sample imagery

Deprocessing Equipments



Allied Multiprep

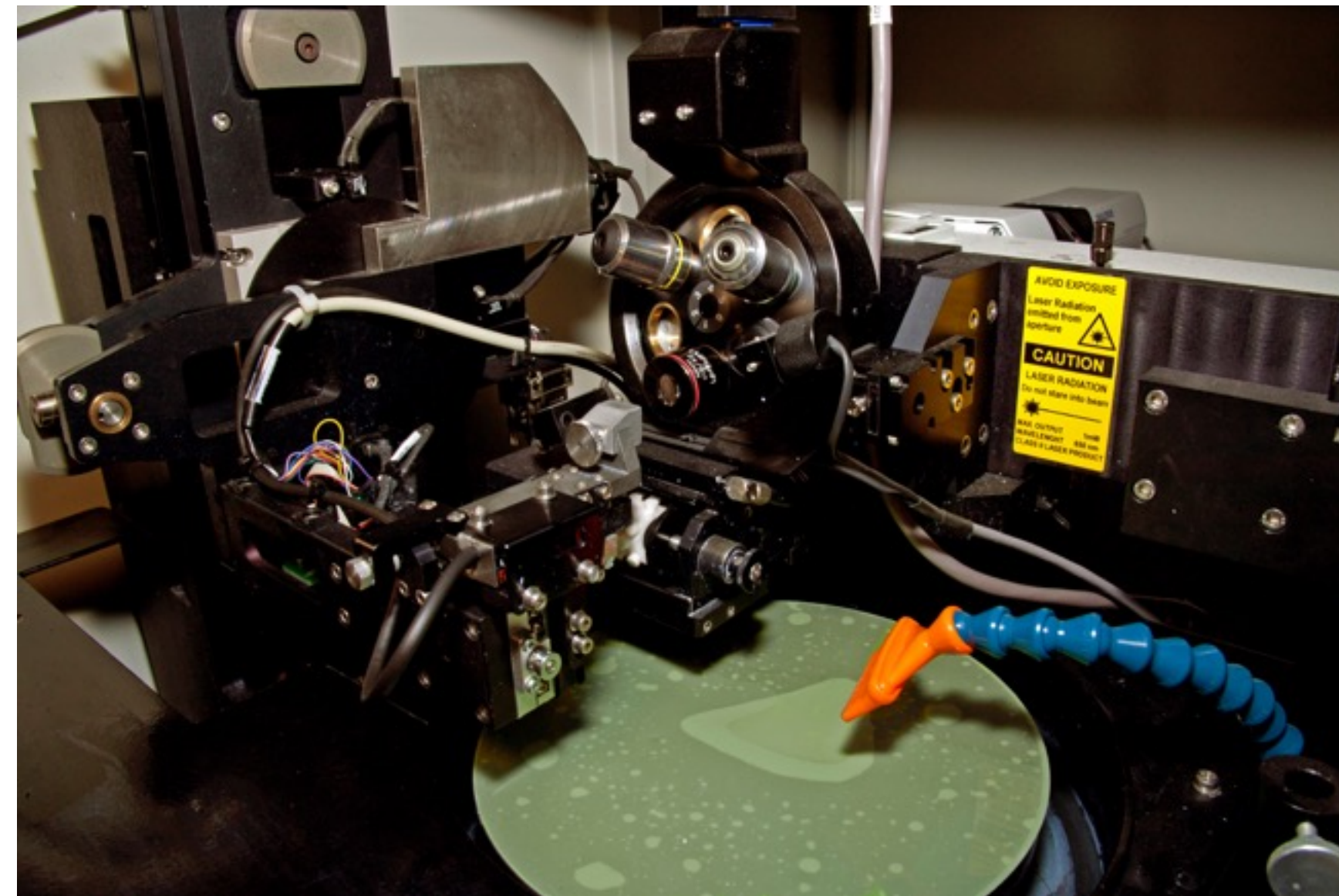
- Chemical Mechanical Polisher
- Backside substrate thinning
- Cross-sectioning
- Deprocessing

Lab Introduction

Deprocessing Equipments

Sagitta Centar Frontier

- CMP and optical microscope
- Accurate polishing thanks to microscope assisted tilt setup
- Fully automated in situ optical scan capability
- Reliable and repeatable process thanks to software assistant

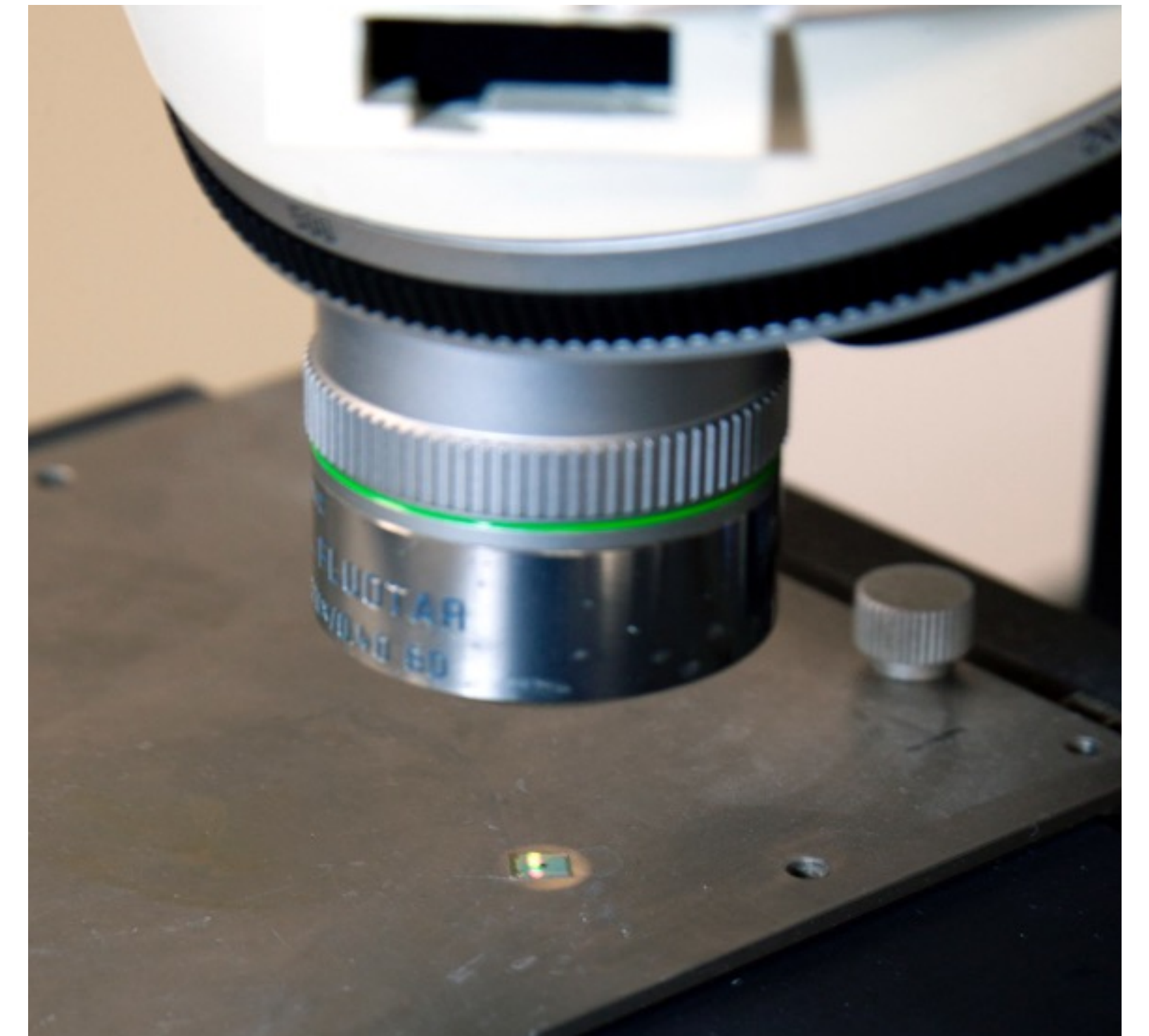


Imagery Equipments

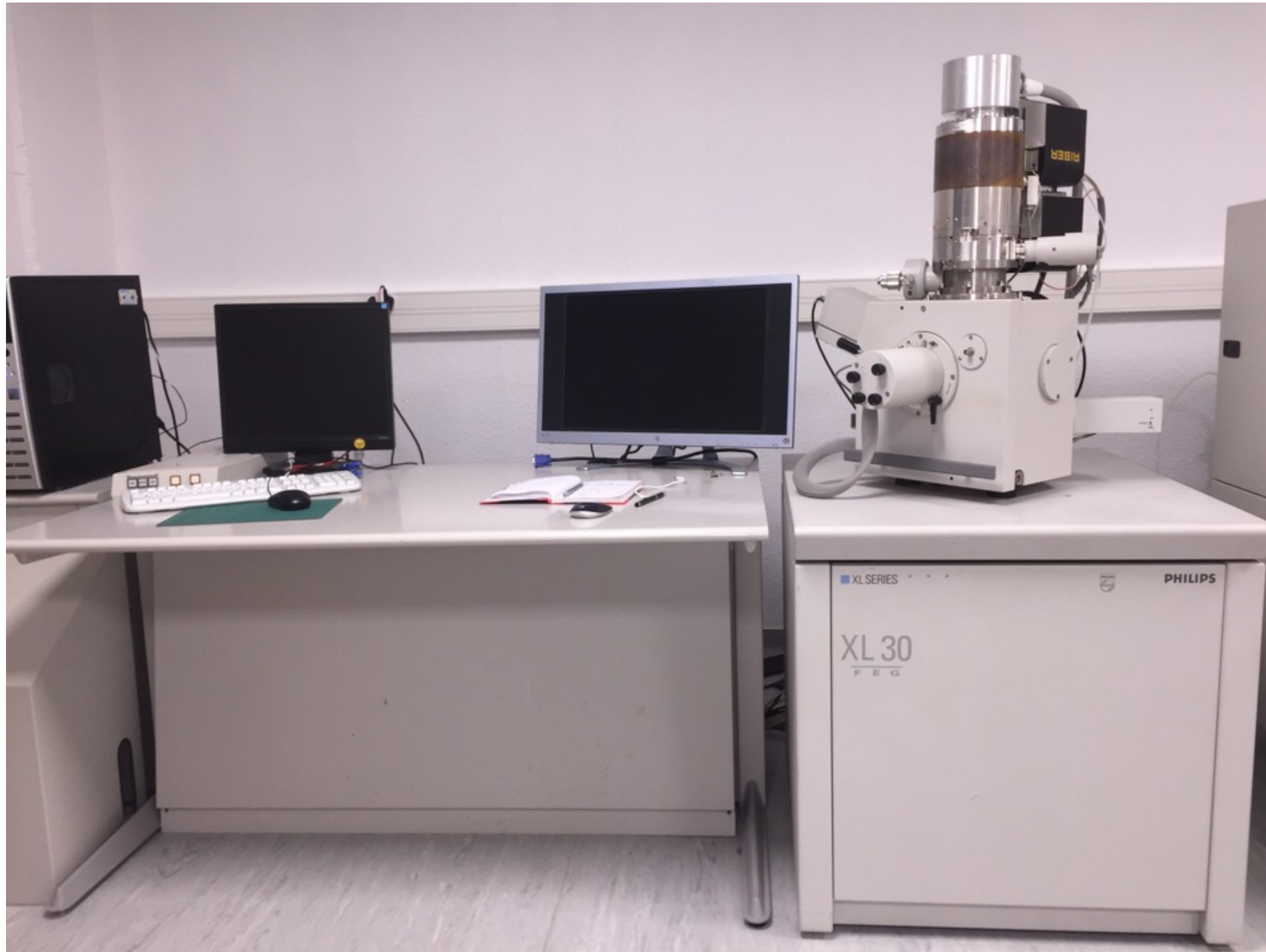


Leica Optical Microscope

- Process Review only
- 10 Meg. camera



Imagery Equipments



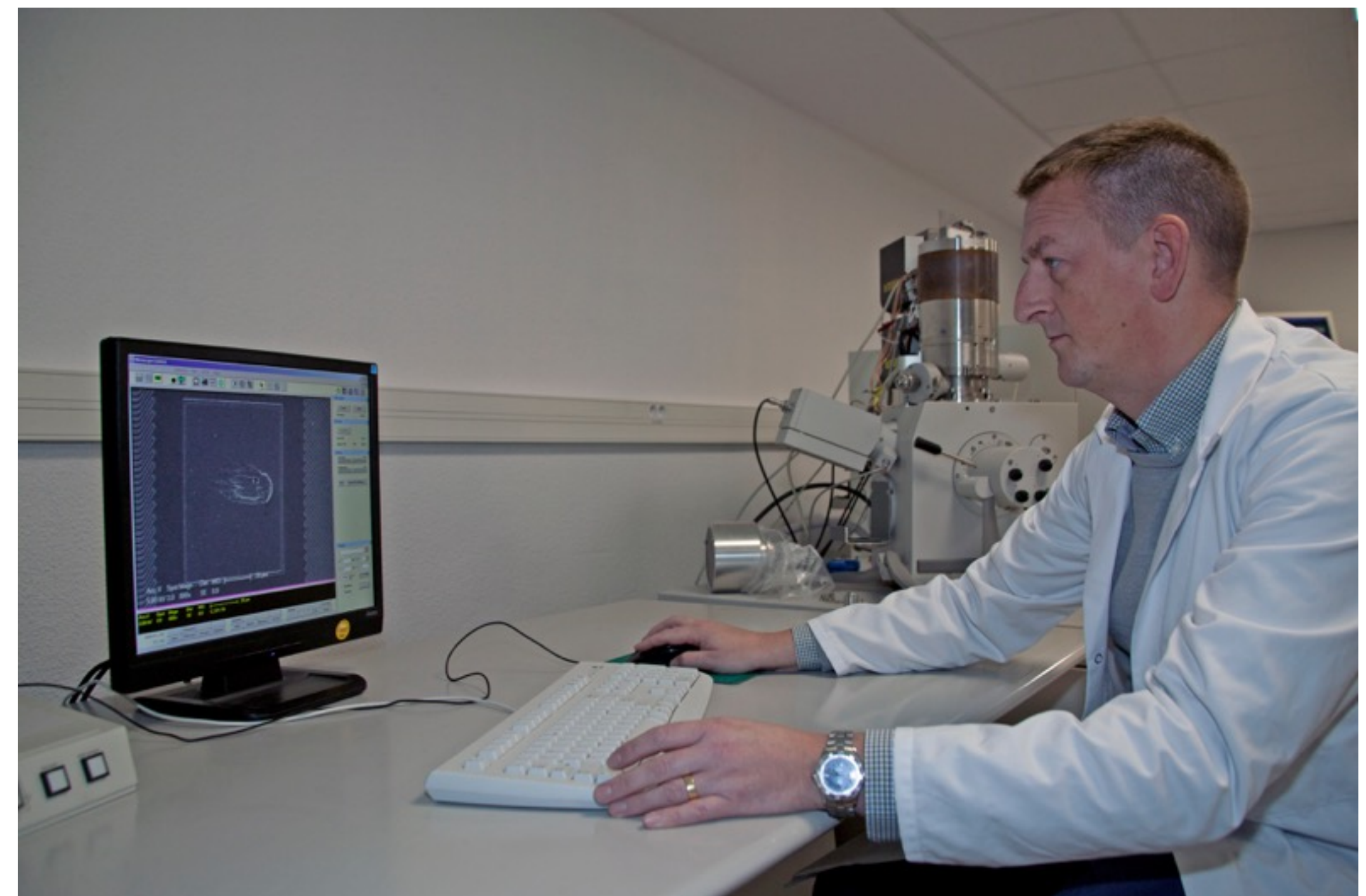
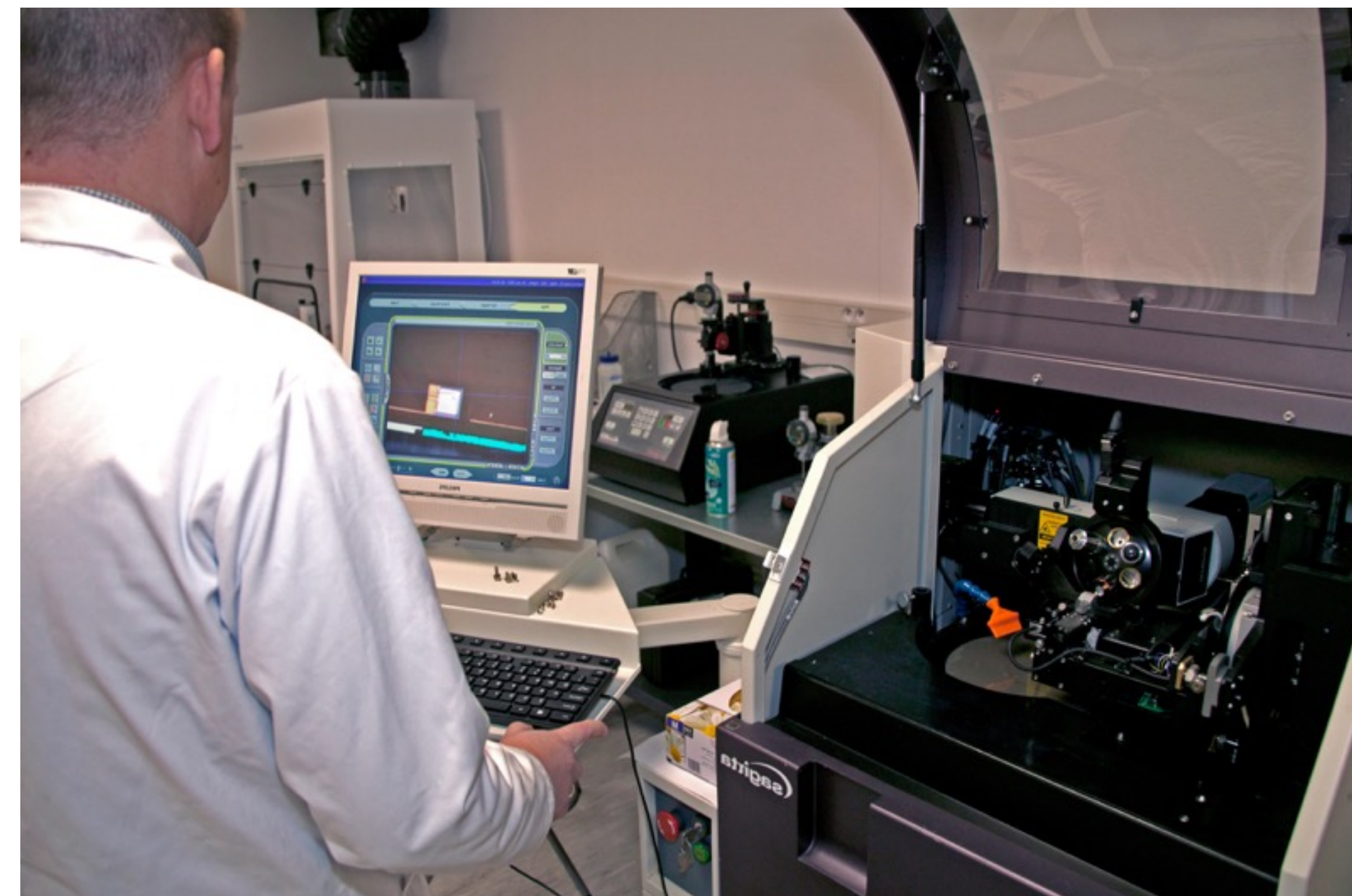
XL30 FEG SEM

- SE detector
- Back Scattered Electron detector
- Fully automated for SEM scanning

Lab Introduction

Lab Expertise

Tony Moor and his decades of lab experience



The background of the entire page is a blue-toned image of a microchip and its surrounding circuit board. The chip is centrally located, showing a grid of pins and internal structures. The circuit traces are intricate and spread across the entire frame, creating a technical and digital aesthetic.

CONTACT

Olivier Thomas

Co-director

+33 6 64 80 06 87

olivier@icinsidelab.com

Clarisse Ginet

Texplained Co-director and Head of
Business Development

+33 6 35 54 12 04

clarisse@icinsidelab.com

Tony Moor

Co-director

+33 7 71 82 22 98

tony@icinsidelab.com